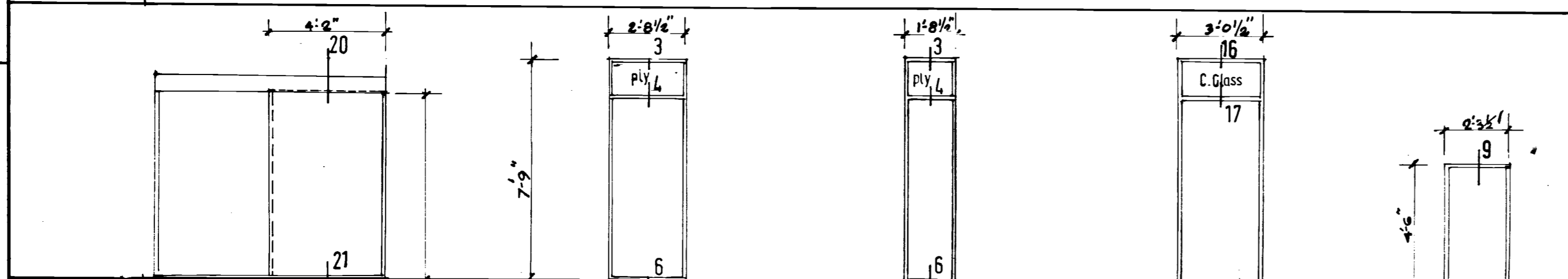
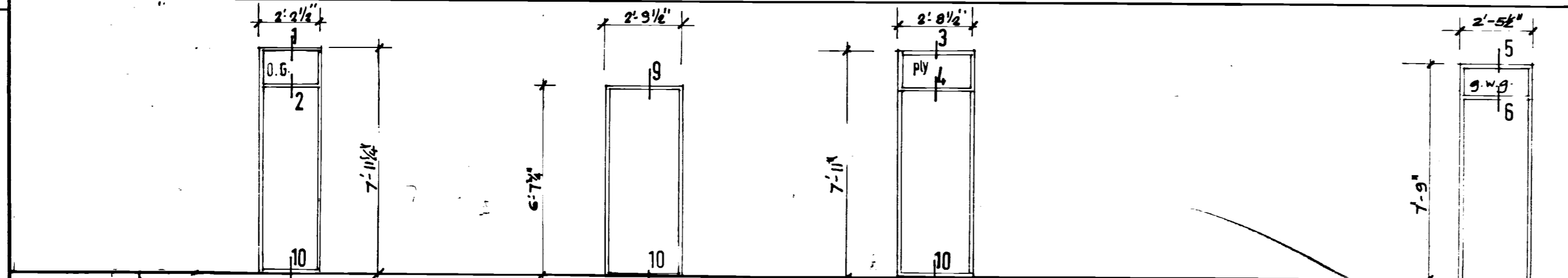


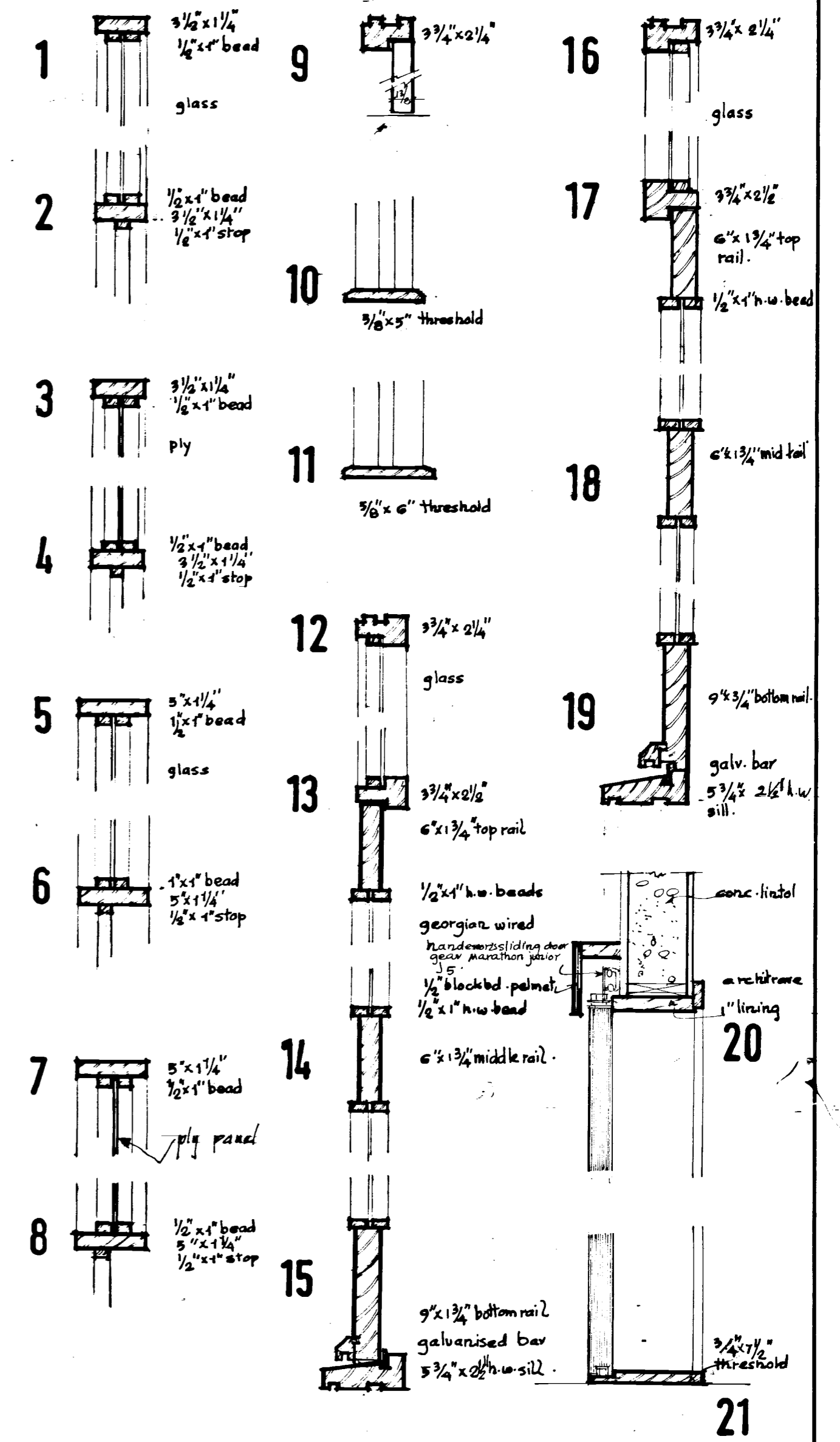
DOOR	A	A	C	D
	2'-9" x 6'-6" x 1 3/4" glazed door	2'-9 1/2" x 6'-6" x 1 3/4" glazed door	2'-0" x 6'-6" x 1 3/8"	2'-0" x 6'-6" x 1 3/8" silkstone or similar
FRAME	1	2	3 glazed panel	4 glazed panel.



DOOR	E	D	G	H	J
	4'-0" x 6'-6" x 1 3/8" sliding door	2'-6" x 6'-6" x 1 3/8" silkstone or similar	1'-0" x 6'-6" x 1 3/8" silkstone or similar	2'-9" x 6'-6" x 1 3/8" silkstone or similar	2'-0" x 4'-6"
FRAME	5	6	7	8	9
		ply panel	ply panel	glazed panel	



DOOR	C	L	D	B
	6'-0" x 6'-6" x 1 3/8" silkstone or similar	2'-6" x 6'-6" x 1 3/8" silkstone or similar	2'-6" x 6'-6" x 1 3/8" silkstone or similar	2'-3" x 6'-6" x 1 3/8" silkstone or similar
FRAME	10	11	12	14
	glazed panel		ply panel	



MARTINS WOOD STEVENAGE		A. Draw 13 modified	14-9-71	3 Bed / 5 Person house	346
		B. various sections & dims altered	sept 71		
Harry Moncrieff, F.R.I.B.A., M.T.P.I., Co-operative Planning Ltd., 73b South Side, Clapham Common, S.W.4				Door Schedule	4/34B
				Jan, 1971	Scale 1/4" to 1'-0" & f.s.